

Answer All questions.

All multiple choice questions must be answered with a cross in the box for the correct answer from A to D. If you change your mind about an answer, put a line through the box and then mark your new answer with a cross .

1 Which of the following is an example of a scalar quantity?

- A displacement
- B energy
- C momentum
- D velocity

(Total for Question 1 = 1 mark)

2 Which row of the table summarises the mass and charge of an antineutron?

	Mass / u	Charge / e
<input type="checkbox"/> A	0	0
<input type="checkbox"/> B	0	-1
<input type="checkbox"/> C	1	0
<input type="checkbox"/> D	1	+1

(Total for Question 2 = 1 mark)

3 The distance between a proton and an electron is r . The electrostatic force is F .

The distance between the proton and electron is doubled.

Which of the following is equal to the electrostatic force at this separation?

- A $2F$
- B $\frac{F}{2}$
- C $\frac{F}{3}$
- D $\frac{F}{4}$

(Total for Question 3 = 1 mark)



DO NOT WRITE IN THIS AREA

DO NOT WRITE IN THIS AREA

DO NOT WRITE IN THIS AREA

4 Which of the following is a base SI unit?

- A ampere
- B coulomb
- C joule
- D newton

(Total for Question 4 = 1 mark)

5 A high-energy proton can interact with a photon to produce two particles.

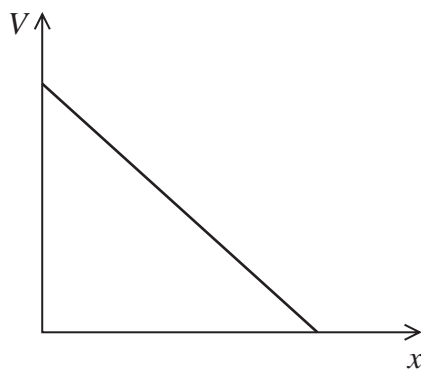
Which of the following could be the two particles produced?

- A $n + \pi^0$
- B $n + \pi^+$
- C $\pi^0 + \pi^+$
- D $\pi^- + \pi^+$

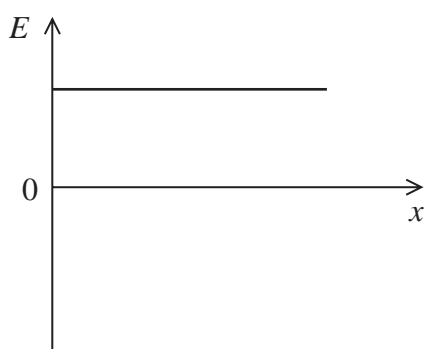
(Total for Question 5 = 1 mark)



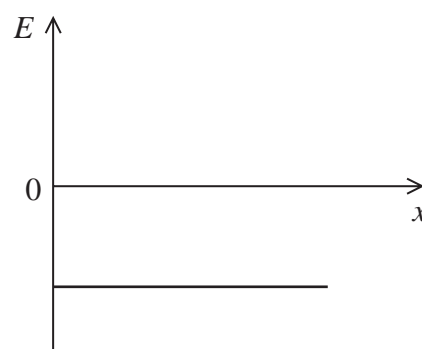
6 The graph shows how an electric potential V varies with distance x .



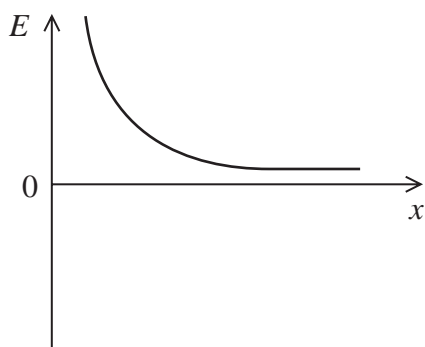
Which of the following shows the corresponding variation of electric field strength E with x ?



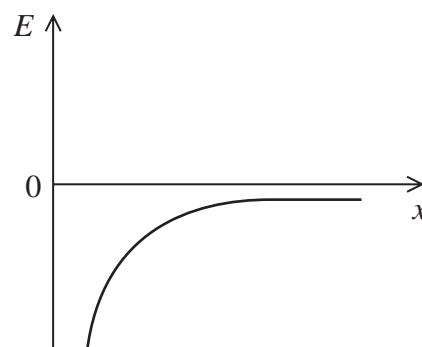
A



B



C



D

(Total for Question 6 = 1 mark)

DO NOT WRITE IN THIS AREA

DO NOT WRITE IN THIS AREA

DO NOT WRITE IN THIS AREA



- 7 The intensity of light incident on a light dependent resistor (LDR) can vary both its electrical resistance R and the number of charge carriers per unit volume n . The light intensity on an LDR is increased.

Which row of the table describes the effect on R and n ?

	R	n
<input type="checkbox"/> A	decreases	decreases
<input type="checkbox"/> B	decreases	increases
<input type="checkbox"/> C	increases	decreases
<input type="checkbox"/> D	increases	increases

(Total for Question 7 = 1 mark)

- 8 A proton has a mass of 1.67×10^{-27} kg.

Which of the following shows the conversion of this mass to GeV/c^2 ?

- A $\frac{1.67 \times 10^{-27} \times 1.60 \times 10^{-10}}{(3.00 \times 10^8)^2}$
- B $\frac{1.67 \times 10^{-27} \times 1.60 \times 10^{-19}}{(3.00 \times 10^8)^2}$
- C $\frac{1.67 \times 10^{-27} \times (3.00 \times 10^8)^2}{1.60 \times 10^{-10}}$
- D $\frac{1.67 \times 10^{-27}}{1.60 \times 10^{-10} \times (3.00 \times 10^8)^2}$

(Total for Question 8 = 1 mark)

- 9 The blade of a lawnmower rotates at a speed of 50 revolutions per second.

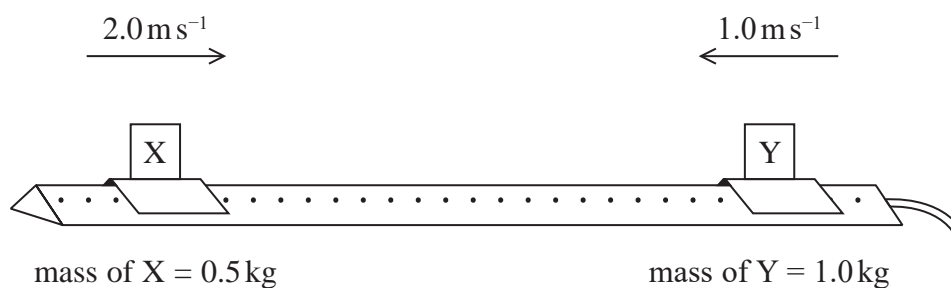
Which of the following is the angular speed of the blade in rads s^{-1} ?

- A 7.96
- B 15.9
- C 157
- D 314

(Total for Question 9 = 1 mark)



- 10 Two gliders, X and Y, are placed on an air track. The gliders are pushed towards each other as shown.



The gliders collide and continue to move after the collision.

Which row of the table could show the velocities of X and Y, in ms^{-1} , after the collision?

	X	Y
<input type="checkbox"/> A	-1.0	0.5
<input type="checkbox"/> B	-1.0	-0.5
<input type="checkbox"/> C	-2.0	-1.0
<input type="checkbox"/> D	-2.0	2.0

(Total for Question 10 = 1 mark)

DO NOT WRITE IN THIS AREA

DO NOT WRITE IN THIS AREA

DO NOT WRITE IN THIS AREA

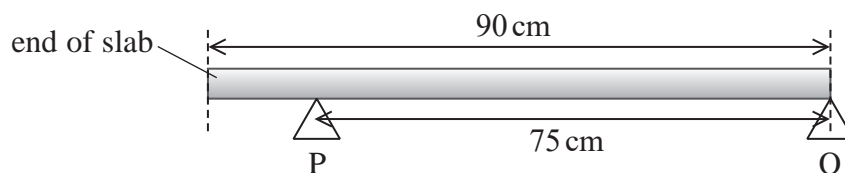


11 A uniform paving slab is to be used as a garden step.

(a) State what is meant by the centre of gravity of an extended body.

(1)

(b) The paving slab has a weight of 310 N and a length of 90 cm and will be supported at two points, P and Q, as shown. The distance between P and Q will be 75 cm.



This might be unsafe because a person who places all their weight at the end of the slab might tip the slab.

A person of mass 70 kg stands at the end of the slab.

Deduce whether the slab will tip.

(4)

(Total for Question 11 = 5 marks)

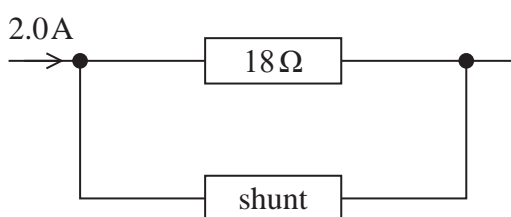


- 12 Analogue ammeters were used before digital meters became widely available. The analogue ammeter shown will measure a maximum current of 1.0 mA and has a resistance of $18\ \Omega$.



(Source: © David J. Green/Alamy Stock Photo)

The analogue ammeter can be adapted to measure a larger current by adding a resistor, known as a shunt, in parallel with the ammeter. The arrangement is shown below. The analogue ammeter is represented by the $18\ \Omega$ resistor.



The maximum current through the $18\ \Omega$ resistor remains as 1.0 mA.

- (a) Show that the shunt would need to have a resistance of about $0.01\ \Omega$ to adapt this ammeter to read up to a maximum current of 2.0 A.

(3)

.....

.....

.....

.....

.....

.....

.....

DO NOT WRITE IN THIS AREA

DO NOT WRITE IN THIS AREA

DO NOT WRITE IN THIS AREA



(b) A shunt of this resistance was usually made from Manganin wire.

Calculate the length of Manganin wire of radius 0.95 mm required to make this shunt.

resistivity of Manganin = $4.55 \times 10^{-7} \Omega \text{m}$

(3)

Length =

(Total for Question 12 = 6 marks)

DO NOT WRITE IN THIS AREA

DO NOT WRITE IN THIS AREA

DO NOT WRITE IN THIS AREA



- 13 The photograph shows a model racing car set. The curved parts of the track are semicircular. The car makes electrical contact with the track using metal brushes underneath the car.



DO NOT WRITE IN THIS AREA

DO NOT WRITE IN THIS AREA

DO NOT WRITE IN THIS AREA

- (a) There is a maximum speed for the car to stay on the curved part of the track. Explain why the car will slip off the curved part of the track if the car exceeds the maximum speed.

(3)

.....

.....

.....

.....

.....

.....

- (b) The following measurements are made for a car starting at rest on a straight piece of track.

distance travelled = 1.2 m

time taken = 0.77 s

- (i) Show that the final velocity of the car is about 3 m s^{-1} .

Assume the acceleration is constant.

(2)

.....

.....

.....



DO NOT WRITE IN THIS AREA

DO NOT WRITE IN THIS AREA

DO NOT WRITE IN THIS AREA

- (ii) The final velocity calculated in (b)(i) is the maximum velocity before the car slips off the track.

Calculate the maximum horizontal force between the curved part of the track and the car.

mass of car = 0.050 kg

radius of curved part of track = 0.042 m

(2)

.....

.....

.....

.....

Maximum horizontal force =

- (c) The cars are controlled separately and so can be raced, with one car on the inner lane and the other on the outer lane. The cars are identical. Each car is raced at its highest speed for that lane.

Explain why the outcome of the race is difficult to predict.

(3)

.....

.....

.....

.....

.....

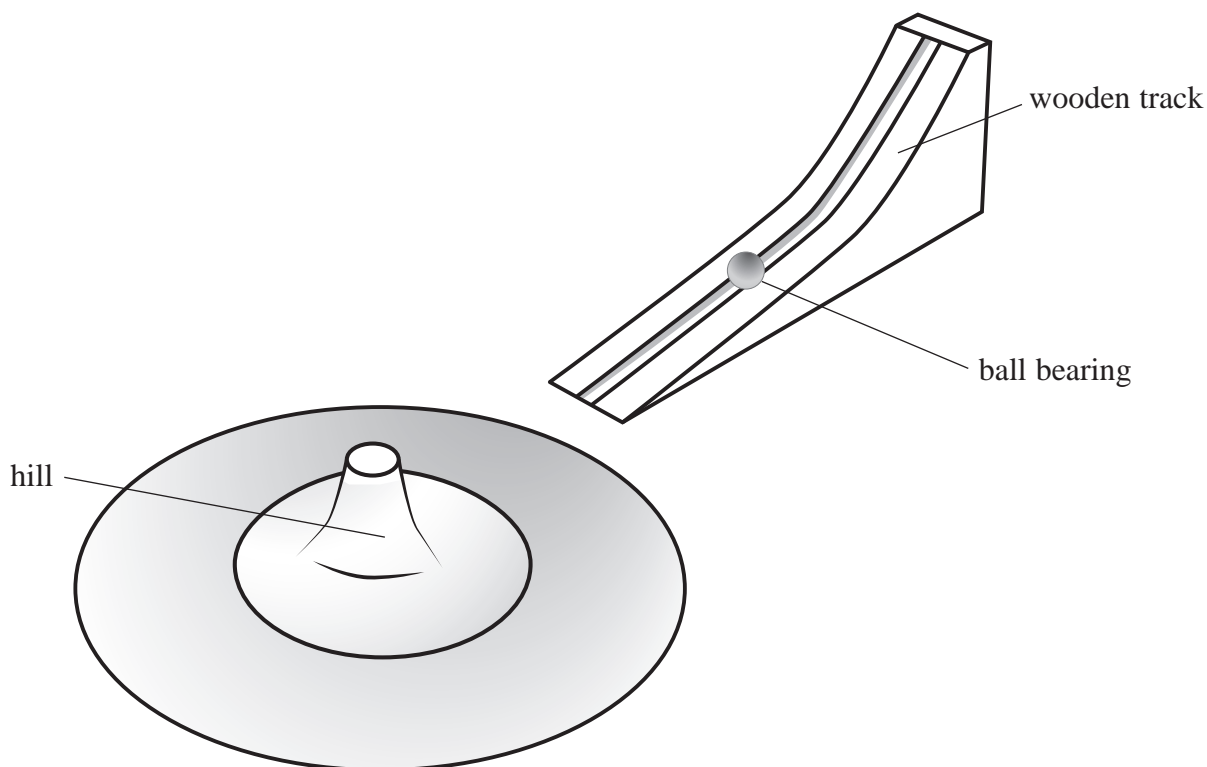
.....

.....

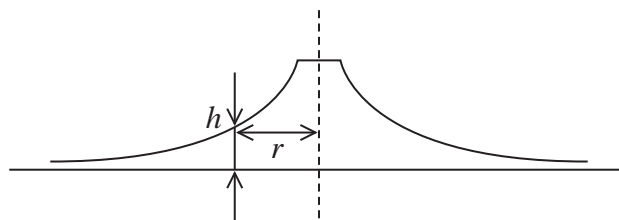
(Total for Question 13 = 10 marks)



- 14 The diagram shows a model used to demonstrate alpha particle scattering. A ball bearing is set rolling on a wooden track. The track is positioned so that the ball bearing rolls onto a metal sheet with a curved surface known as a 'hill'.



The diagram shows a vertical cross-section through the hill. The surface is curved so that the height of a point h on the curved surface is inversely proportional to the distance r from the centre of the hill.



DO NOT WRITE IN THIS AREA

DO NOT WRITE IN THIS AREA

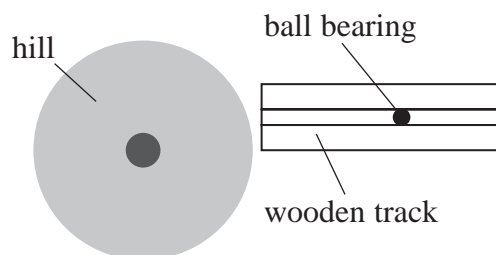
DO NOT WRITE IN THIS AREA



- (a) Explain why the hill is suitable as a model for the electric field surrounding the nucleus of an atom.

(3)

- (b) A plan view of the arrangement is shown.



The wooden track is moved to different positions and the ball bearing is released.

Describe the results of the alpha particle scattering experiment and how these can be demonstrated by moving the wooden track to different positions.

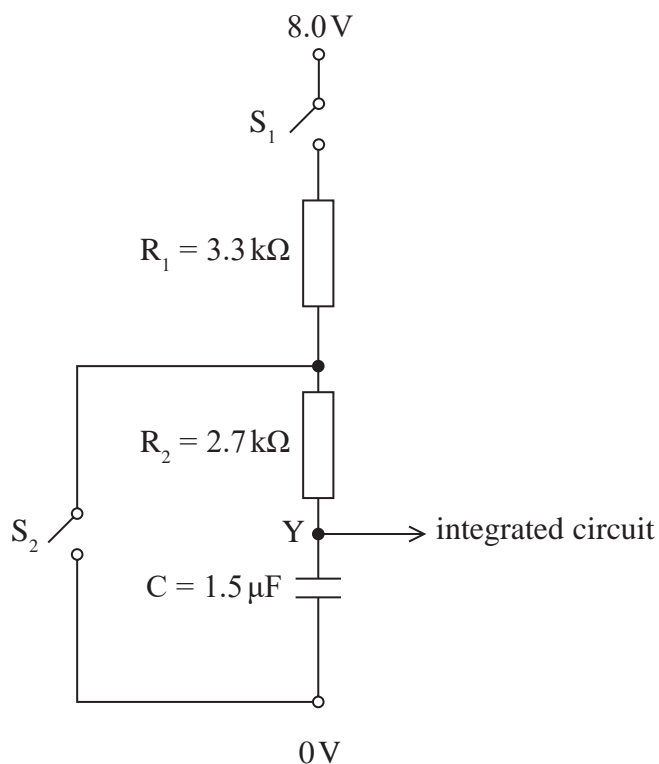
(4)

(Total for Question 14 = 7 marks)



15 The properties of capacitors make them useful in timing circuits.

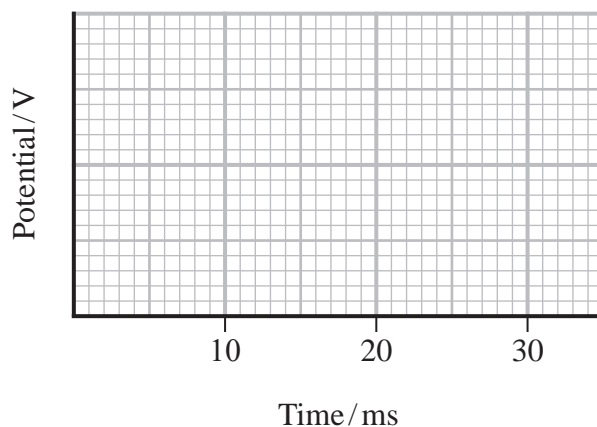
The following circuit is used to provide an input Y to an integrated circuit.



(a) Initially the capacitor is uncharged. The switch S_1 is closed.

Sketch a graph to show how the potential at point Y varies with time.

(3)



DO NOT WRITE IN THIS AREA

DO NOT WRITE IN THIS AREA

DO NOT WRITE IN THIS AREA

(b) When the potential at Y is 8.0 V, the switch S_2 is closed.

(i) Calculate the time taken for the potential at Y to decrease to 2.0 V.

(3)

Time taken =

(ii) Calculate the energy stored on the capacitor when the potential at Y is 2.0 V.

(2)

Energy stored =

(c) When the potential at Y is 2.0 V, the switch S_2 is opened.

Calculate the power dissipated by the resistance R_1 when the potential at Y is 2.0 V.

(3)

Power dissipated =

(Total for Question 15 = 11 marks)

DO NOT WRITE IN THIS AREA

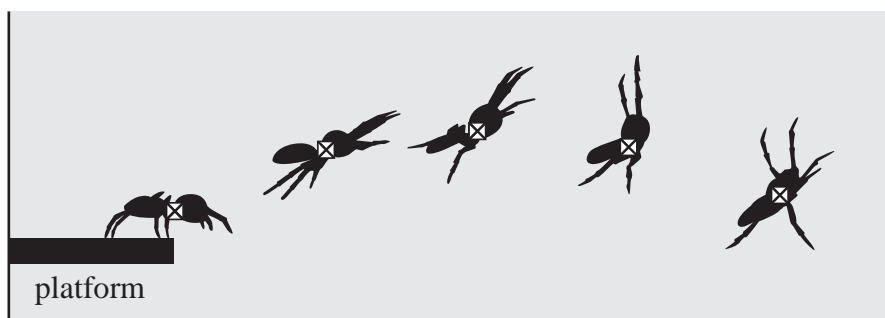
DO NOT WRITE IN THIS AREA

DO NOT WRITE IN THIS AREA



16 Scientists have been studying a type of jumping spider that can jump up to six times its body length.

- (a) The scientists photographed a spider at 0.02s intervals, during a jump. The picture is taken from the photograph and is shown actual size.



- (i) Deduce whether the images show that the motion in the x -direction is independent of the motion in the y -direction. You should take measurements using the cross marking the centre of gravity of the spider.

(4)

.....

.....

.....

.....

.....

.....

.....

.....

.....

.....

DO NOT WRITE IN THIS AREA

DO NOT WRITE IN THIS AREA

DO NOT WRITE IN THIS AREA



- (ii) Show that the initial velocity of the spider at the start of the jump is about 1 m s^{-1} .
You should take measurements using the cross marking the centre of gravity of the spider.

(5)

- (iii) The spider achieves this jump by extending its two back legs by 3.0 mm.

Calculate the average force the spider exerts in each leg to achieve the jump.

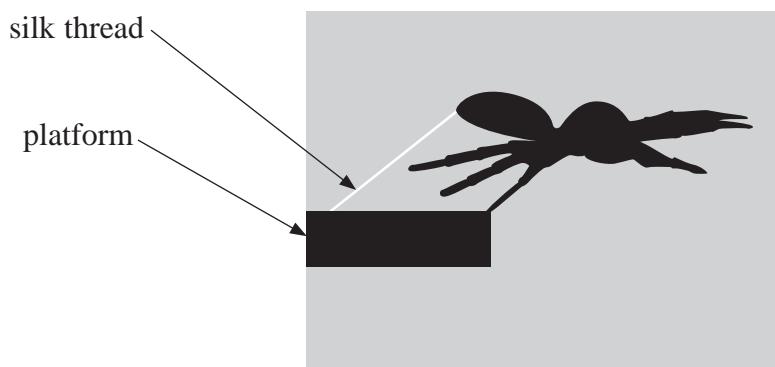
mass of spider = 150 mg

(3)

Average force =



- (b) Just as the spider starts the jump, it fixes a silk thread to the platform. It is thought that the thread acts as a safety line in case the spider falls.



A student makes the comment:

‘If the silk thread can withstand a tension equal to the weight of the spider then this safety system should work.’

Deduce whether this statement is correct.

(2)

.....

.....

.....

.....

.....

.....

(Total for Question 16 = 14 marks)



DO NOT WRITE IN THIS AREA

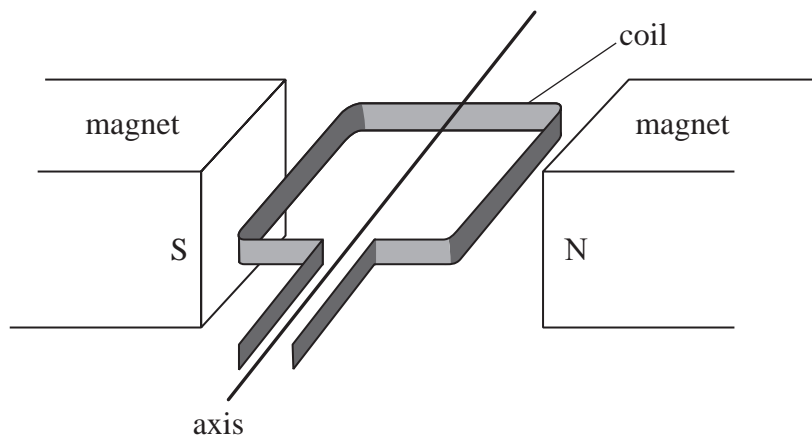
DO NOT WRITE IN THIS AREA

DO NOT WRITE IN THIS AREA

BLANK PAGE



- 17 Hybrid electric vehicles (HEV) use the same device both as a generator to charge the car battery and as an electric motor to support the propulsion system. A simplified diagram of the device is shown. The coil can rotate freely around the axis.



- *(a) Describe how the device can be used as both a generator and an electric motor.

(6)

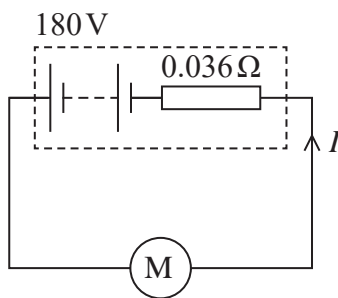
DO NOT WRITE IN THIS AREA

DO NOT WRITE IN THIS AREA

DO NOT WRITE IN THIS AREA



- (b) The circuit diagram shows a car battery connected to an electric motor for a HEV. The battery has an electromotive force (e.m.f.) 180 V and internal resistance 0.036Ω .



The motor has a maximum power of 88 kW.

- (i) Show that the current I drawn by the electric motor when operating at this power would be given by the equation

$$0.036I^2 - 180I + 88\,000 = 0$$

(3)

- (ii) Solving the equation above produces an answer of $I = 550 \text{ A}$. At maximum power, the car can accelerate from rest to sixty miles per hour in under 7 s.

The maximum charge capacity of the battery within this HEV is 6.1 amp-hour.

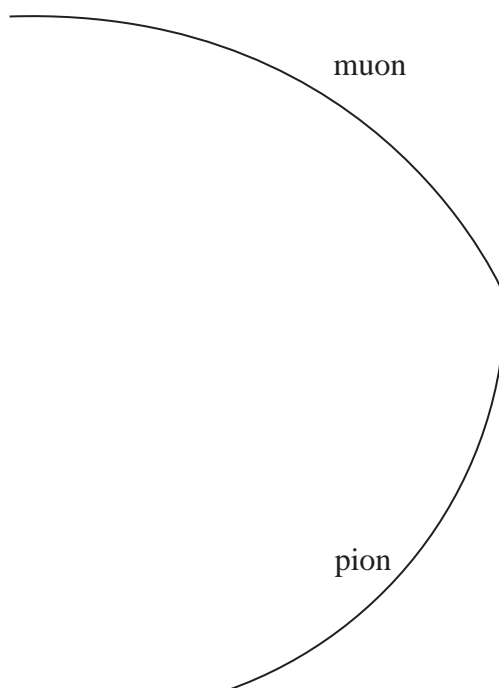
Deduce whether the battery could maintain this current for up to 7 s.

(2)

(Total for Question 17 = 11 marks)



- 18 A negatively charged pion decays into a muon and an antineutrino. The diagram shows tracks in a particle detector formed in such an event.



- (a) Deduce whether the antineutrino is charged, giving two reasons for your decision.

(2)

.....

.....

.....

.....

- (b) Write a particle equation to represent this decay.

(1)

.....

DO NOT WRITE IN THIS AREA

DO NOT WRITE IN THIS AREA

DO NOT WRITE IN THIS AREA



DO NOT WRITE IN THIS AREA

DO NOT WRITE IN THIS AREA

DO NOT WRITE IN THIS AREA

(c) According to the standard model, the pion and muon are classified within two different groups of particles.

State which group each particle belongs to and describe the two groups.

(4)

.....

.....

.....

.....

.....

.....

.....

(d) The momentum of the pion just before it decays is 9.1×10^{-20} N s.

Determine the magnetic flux density of the magnetic field which acts in the detector and state its direction.

Scale of diagram 1 cm represents 10 cm

pion charge = -1.6×10^{-19} C

(4)

.....

.....

.....

.....

.....

.....

.....

.....

Magnetic flux density =

Direction of magnetic field =



(e) Use a vector diagram to determine the momentum of the antineutrino.

The initial momentum of the muon is $1.59 \times 10^{-19} \text{Ns}$.

(5)

Momentum of antineutrino =

Direction of antineutrino =

(Total for Question 18 = 16 marks)

TOTAL FOR PAPER = 90 MARKS



List of data, formulae and relationships

Acceleration of free fall	$g = 9.81 \text{ m s}^{-2}$	(close to Earth's surface)
Boltzmann constant	$k = 1.38 \times 10^{-23} \text{ J K}^{-1}$	
Coulomb law constant	$k = \frac{1}{4\pi\epsilon_0} = 8.99 \times 10^9 \text{ N m}^2 \text{ C}^{-2}$	
Electron charge	$e = -1.60 \times 10^{-19} \text{ C}$	
Electron mass	$m_e = 9.11 \times 10^{-31} \text{ kg}$	
Electronvolt	$1 \text{ eV} = 1.60 \times 10^{-19} \text{ J}$	
Gravitational constant	$G = 6.67 \times 10^{-11} \text{ N m}^2 \text{ kg}^{-2}$	
Gravitational field strength	$g = 9.81 \text{ N kg}^{-1}$	(close to Earth's surface)
Permittivity of free space	$\epsilon_0 = 8.85 \times 10^{-12} \text{ F m}^{-1}$	
Planck constant	$h = 6.63 \times 10^{-34} \text{ J s}$	
Proton mass	$m_p = 1.67 \times 10^{-27} \text{ kg}$	
Speed of light in a vacuum	$c = 3.00 \times 10^8 \text{ m s}^{-1}$	
Stefan-Boltzmann constant	$\sigma = 5.67 \times 10^{-8} \text{ W m}^{-2} \text{ K}^{-4}$	
Unified atomic mass unit	$u = 1.66 \times 10^{-27} \text{ kg}$	

Mechanics

Kinematic equations of motion

$$s = \frac{(u + v)t}{2}$$

$$v = u + at$$

$$s = ut + \frac{1}{2}at^2$$

$$v^2 = u^2 + 2as$$

Forces

$$\Sigma F = ma$$

$$g = \frac{F}{m}$$

$$W = mg$$

$$\text{moment of force} = Fx$$

Momentum

$$p = mv$$

Work, energy and power

$$\Delta W = F\Delta s$$

$$E_k = \frac{1}{2}mv^2$$

$$\Delta E_{\text{grav}} = mg\Delta h$$

$$P = \frac{E}{t}$$

$$P = \frac{W}{t}$$

$$\text{efficiency} = \frac{\text{useful energy output}}{\text{total energy input}}$$

$$\text{efficiency} = \frac{\text{useful power output}}{\text{total power input}}$$



Electric circuits

Potential difference

$$V = \frac{W}{Q}$$

Resistance

$$R = \frac{V}{I}$$

Electrical power and energy

$$P = VI$$

$$P = I^2R$$

$$P = \frac{V^2}{R}$$

$$W = VIt$$

Resistivity

$$R = \frac{\rho l}{A}$$

Current

$$I = \frac{\Delta Q}{\Delta t}$$

$$I = nqvA$$

Materials

Density

$$\rho = \frac{m}{V}$$

Stokes' law

$$F = 6\pi\eta rv$$

Hooke's law

$$\Delta F = k\Delta x$$

Young modulus

$$\text{Stress } \sigma = \frac{F}{A}$$

$$\text{Strain } \varepsilon = \frac{\Delta x}{x}$$

$$E = \frac{\sigma}{\varepsilon}$$

Elastic strain energy

$$\Delta E_{\text{el}} = \frac{1}{2}F\Delta x$$

Waves and particle nature of light

Wave speed

$$v = f\lambda$$

Speed of a transverse wave on a string

$$v = \sqrt{\frac{T}{\mu}}$$

Intensity of radiation

$$I = \frac{P}{A}$$

Power of a lens

$$P = \frac{1}{f}$$

$$P = P_1 + P_2 + P_3 + \dots$$

Thin lens equation

$$\frac{1}{u} + \frac{1}{v} = \frac{1}{f}$$

Magnification for a lens

$$m = \frac{\text{image height}}{\text{object height}} = \frac{v}{u}$$

Diffraction grating

$$n\lambda = d \sin \theta$$

Refractive index

$$n_1 \sin \theta_1 = n_2 \sin \theta_2$$

$$n = \frac{c}{v}$$

Critical angle

$$\sin C = \frac{1}{n}$$

Photon model

$$E = hf$$

Einstein's photoelectric equation

$$hf = \phi + \frac{1}{2}mv_{\text{max}}^2$$

de Broglie wavelength

$$\lambda = \frac{h}{p}$$

DO NOT WRITE IN THIS AREA

DO NOT WRITE IN THIS AREA

DO NOT WRITE IN THIS AREA



Further mechanics

Impulse

$$F\Delta t = \Delta p$$

Kinetic energy of a non-relativistic particle

$$E_k = \frac{p^2}{2m}$$

Motion in a circle

$$v = \omega r$$

$$T = \frac{2\pi}{\omega}$$

$$F = ma = \frac{mv^2}{r}$$

$$a = \frac{v^2}{r}$$

$$a = r\omega^2$$

$$F = mr\omega^2$$

Fields

Coulomb's law

$$F = \frac{Q_1 Q_2}{4\pi\epsilon_0 r^2}$$

Electric field strength

$$E = \frac{F}{Q}$$

$$E = \frac{Q}{4\pi\epsilon_0 r^2}$$

$$E = \frac{V}{d}$$

Electric potential

$$V = \frac{Q}{4\pi\epsilon_0 r}$$

Capacitance

$$C = \frac{Q}{V}$$

Energy stored in a capacitor

$$W = \frac{1}{2}QV$$

$$W = \frac{1}{2}CV^2$$

$$W = \frac{1}{2}\frac{Q^2}{C}$$

Capacitor discharge

$$Q = Q_0 e^{-t/RC}$$

$$I = I_0 e^{-t/RC}$$

$$V = V_0 e^{-t/RC}$$

$$\ln Q = \ln Q_0 - \frac{t}{RC}$$

$$\ln I = \ln I_0 - \frac{t}{RC}$$

$$\ln V = \ln V_0 - \frac{t}{RC}$$

In a magnetic field

$$F = BIl \sin \theta$$

$$F = Bqv \sin \theta$$

Faraday's and Lenz's laws

$$\mathcal{E} = \frac{-d(N\phi)}{dt}$$

Root-mean-square values

$$V_{\text{rms}} = \frac{V_0}{\sqrt{2}}$$

$$I_{\text{rms}} = \frac{I_0}{\sqrt{2}}$$

DO NOT WRITE IN THIS AREA

DO NOT WRITE IN THIS AREA

DO NOT WRITE IN THIS AREA



Nuclear and particle physics

In a magnetic field

$$r = \frac{p}{BQ}$$

Thermodynamics

Heating

$$\Delta E = mc\Delta\theta$$

$$\Delta E = L\Delta m$$

Molecular kinetic theory

$$\frac{1}{2}m\langle c^2 \rangle = \frac{3}{2}kT$$

$$pV = \frac{1}{3}Nm\langle c^2 \rangle$$

Ideal gas equation

$$pV = NkT$$

Stefan-Boltzmann law

$$L = \sigma AT^4$$

$$L = 4\pi r^2\sigma T^4$$

Wien's law

$$\lambda_{\max} T = 2.898 \times 10^{-3} \text{ m K}$$

Space

Intensity

$$I = \frac{L}{4\pi d^2}$$

Redshift of electromagnetic radiation

$$z = \frac{\Delta\lambda}{\lambda} \approx \frac{\Delta f}{f} \approx \frac{v}{c}$$

Cosmological expansion

$$v = H_0 d$$

Nuclear radiation

Mass-energy

$$\Delta E = c^2\Delta m$$

Radioactive decay

$$A = \lambda N$$

$$\frac{dN}{dt} = -\lambda N$$

$$\lambda = \frac{\ln 2}{t_{1/2}}$$

$$N = N_0 e^{-\lambda t}$$

$$A = A_0 e^{-\lambda t}$$

Gravitational fields

Gravitational force

$$F = \frac{Gm_1 m_2}{r^2}$$

Gravitational field strength

$$g = \frac{Gm}{r^2}$$

Gravitational potential

$$V_{\text{grav}} = \frac{-Gm}{r}$$

Oscillations

Simple harmonic motion

$$F = -kx$$

$$a = -\omega^2 x$$

$$x = A \cos \omega t$$

$$v = -A\omega \sin \omega t$$

$$a = -A\omega^2 \cos \omega t$$

$$T = \frac{1}{f} = \frac{2\pi}{\omega}$$

$$\omega = 2\pi f$$

Simple harmonic oscillator

$$T = 2\pi \sqrt{\frac{m}{k}}$$

$$T = 2\pi \sqrt{\frac{l}{g}}$$

